

Witley Neighbourhood Plan

Demographic Baseline Report

on behalf of Witley Parish Council

02 November 2018



Contact

Nexus Planning London
1 Poultry
London, EC2R 8EN
T: +44 (0) 207 261 4207

Job reference no: 33073

Contents

1.0	Introduction	4
2.0	Population and People	6
3.0	Housing	14
4.0	Employment and Economic Activity.....	19
5.0	Travel Patterns	23
6.0	Indices of Multiple Deprivation.....	27
7.0	Conclusions	31

1.0 Introduction

- 1.1 This Demographic Baseline Report identifies demographic data that assists the definition of key characteristics of the Witley Neighbourhood Plan (WNP) Area. It provides a shared resource and reference point for all parties contributing to the preparation of the WNP.
- 1.2 The report considers demographic data from the following data sources:
- 2001 Census data;
 - 2011 Census data;
 - Office of National Statistics (ONS) Mid-Year Population Estimates; and
 - Ministry of Housing, Communities and Local Government's (MHCLG) Indices of Multiple Deprivation.

Geographic Area

- 1.3 Where possible, this report uses data that is specific to the Witley Parish area, as shown at Figure 1. This data is of most relevance to the Neighbourhood Plan as the boundaries of the Neighbourhood Plan Area exactly match the parish boundaries.
- 1.4 However, while Census data is available at a parish level, the ONS Mid-Year Population Estimates and the MHCLG's Indices of Multiple Deprivation are not. These more recent data sets relate to Lower Layer Super Output Areas (LSOAs), which are defined geographic areas that are automatically generated by the ONS for data purposes and are as consistent in population size as possible. Therefore, this report also details data set out in a second geographic area comprised of all seven LSOAs that contain land within the Parish. For the purpose of this report we refer to the seven LSOAs as the Witley Wider Area, which is shown at Figure 2. While these seven LSOAs also include land outside of the parish, this land is sporadically populated and therefore data should be relatively accurate to the demographics of the parish.

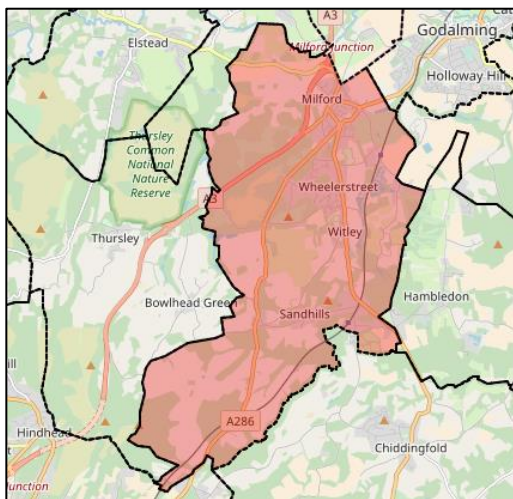


Figure 1: Witley Parish

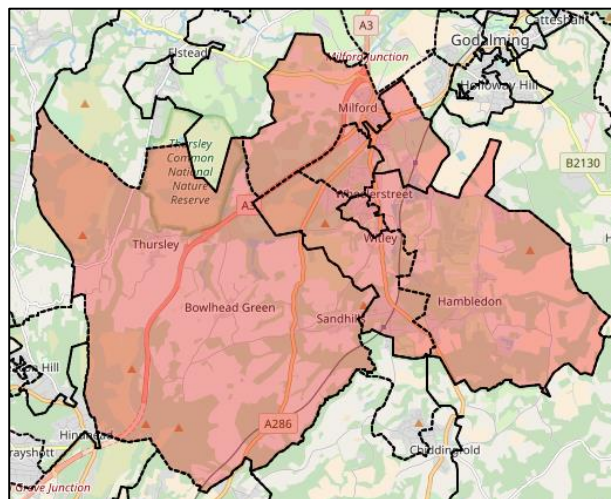


Figure 2: Witley Wider Area

1.5 The seven LSOAs that form the Witley Wider Area are:

- E01030937 : Waverley 011C
- E01030938 : Waverley 011D
- E01030939 : Waverley 011E
- E01030879 : Waverley 012B
- E01030941 : Waverley 012C
- E01030942 : Waverley 012D
- E01030943 : Waverley 012E

2.0 Population and People

2.1 This section of the report sets out key information about the residents of the Witley Neighbourhood Plan Area, and is based on mid-year population estimates and 2011 Census Data.

Population

2.2 At the time of the 2011 Census, the population of the Witley Parish was 8,130 persons¹.

2.3 In addition to Census population data, the ONS produces mid-year population estimates annually². Figure 3 below shows population mid-year population estimates for the Witley Wider Area since 2002. It should be noted that as the Witley Wider Area covers a larger area than the Witley Parish, the population estimates are higher than population recorded for the Witley Parish at the time of the 2011 Census.

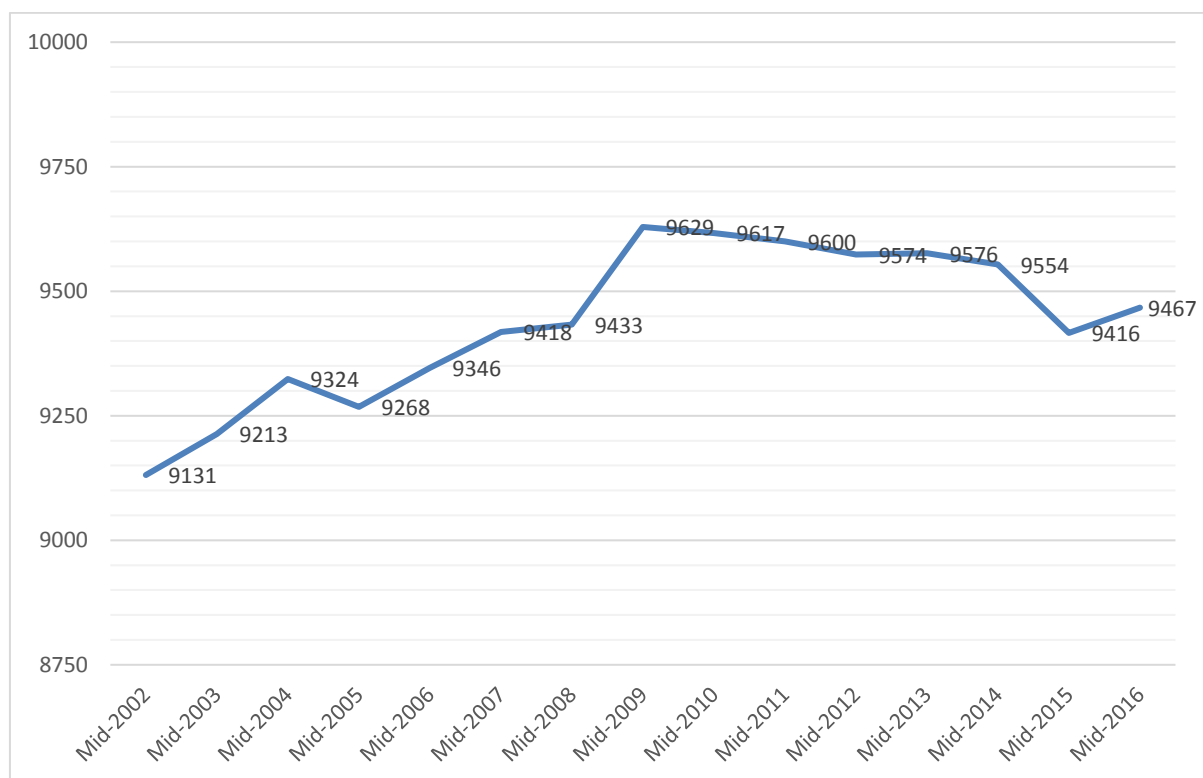


Figure 3: Mid-Year Population Estimates for the Witley Wider Area

¹ ONS (2011), 2011 Census: Witley Parish Local Area Report, available at: <https://www.nomisweb.co.uk/reports/localarea?compare=1170219044>

² ONS (2017) Lower Super Output Area Mid-Year Population Estimates, available at:

<https://www.ons.gov.uk/peoplepopulationandcommunity/populationandmigration/populationestimates/datasets/lowersuperoutputareamidyearpopulationestimates>

2.4 The mid-year population estimates provide a good understanding of population growth and change in Witley over the past 15 years. The population of the Witley Wider Area appears to have peaked in mid-2010 at 9,629 persons. Over the period mid-2002 to mid-2010, the area recorded growth of approximately 500 persons. However, the population of the Witley Wider Area has decreased since the 2010 peak, with a population of 9,467 persons estimated in mid-2016.

2.5 Figure 4 below uses the same mid-year population estimates to compare year-by-year population growth in the Witley Wider Area to year-by-year population growth in Waverley, the South East Region and England.

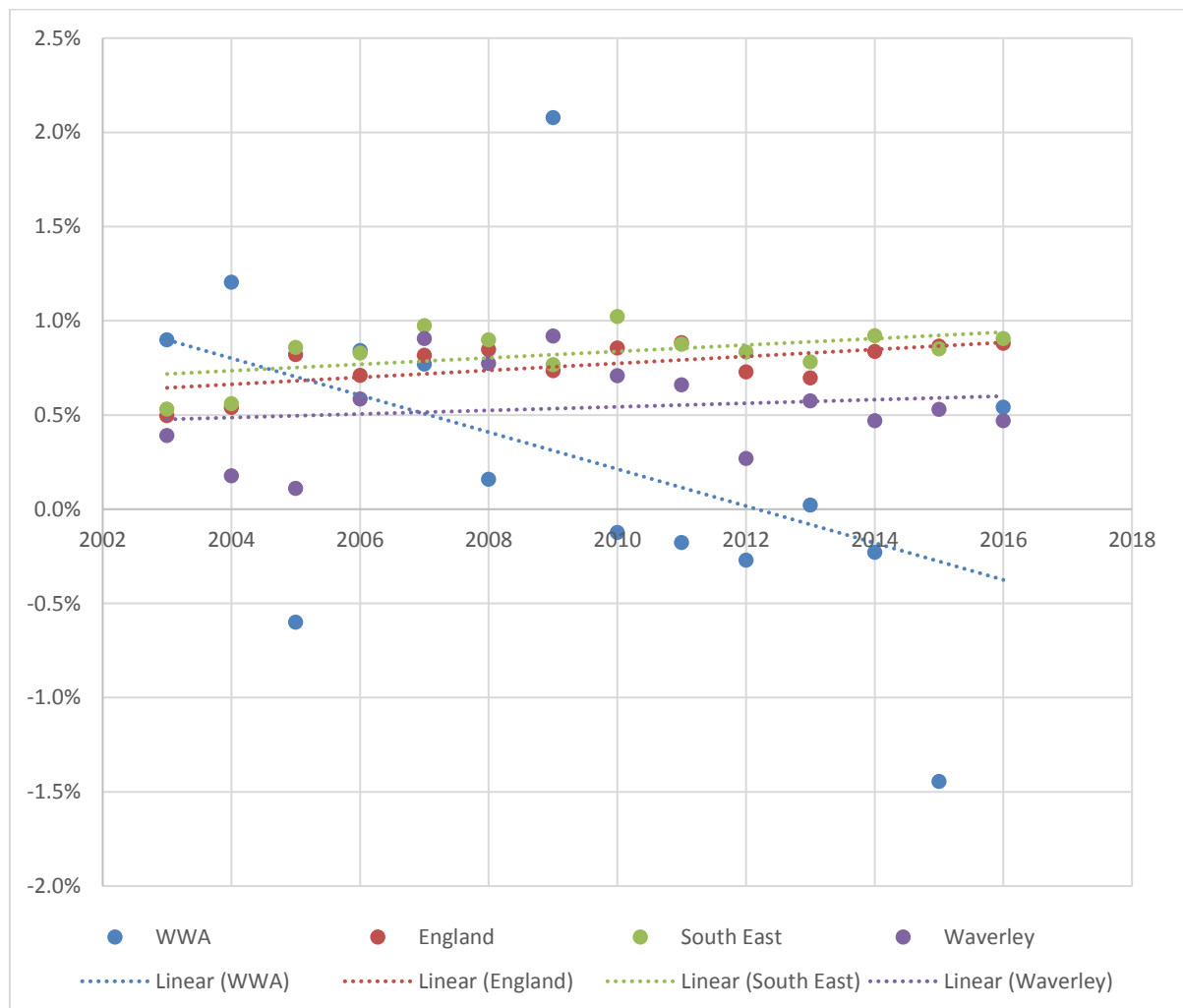


Figure 4: Mid-Year Population Estimates - Comparison of annual percentage growth in population

- 2.6 As is evident from Figure 4 above, population growth has increased steadily in the Waverley District, South East Region, and England since 2002. The annual rate of population growth in the Witley Wider Area has fallen since 2002, and the population has been in slight decline since 2010.
- 2.7 Whilst population growth is on average in decline (as illustrated by the linear trend line), the markers show that the population in the Witley Wider Area tends to flux year on year, between growth and decline. This is common in smaller areas due to small changes to the population having a more noticeable impact on the overall population. It is also worth noting that the population estimates are estimates and may therefore not be as accurate as Census data.

Population Density

- 2.8 Figure 5 below sets out the population density for the Witley Parish at the time of the 2011 Census³, in comparison to Waverley District, the South East Region and England.

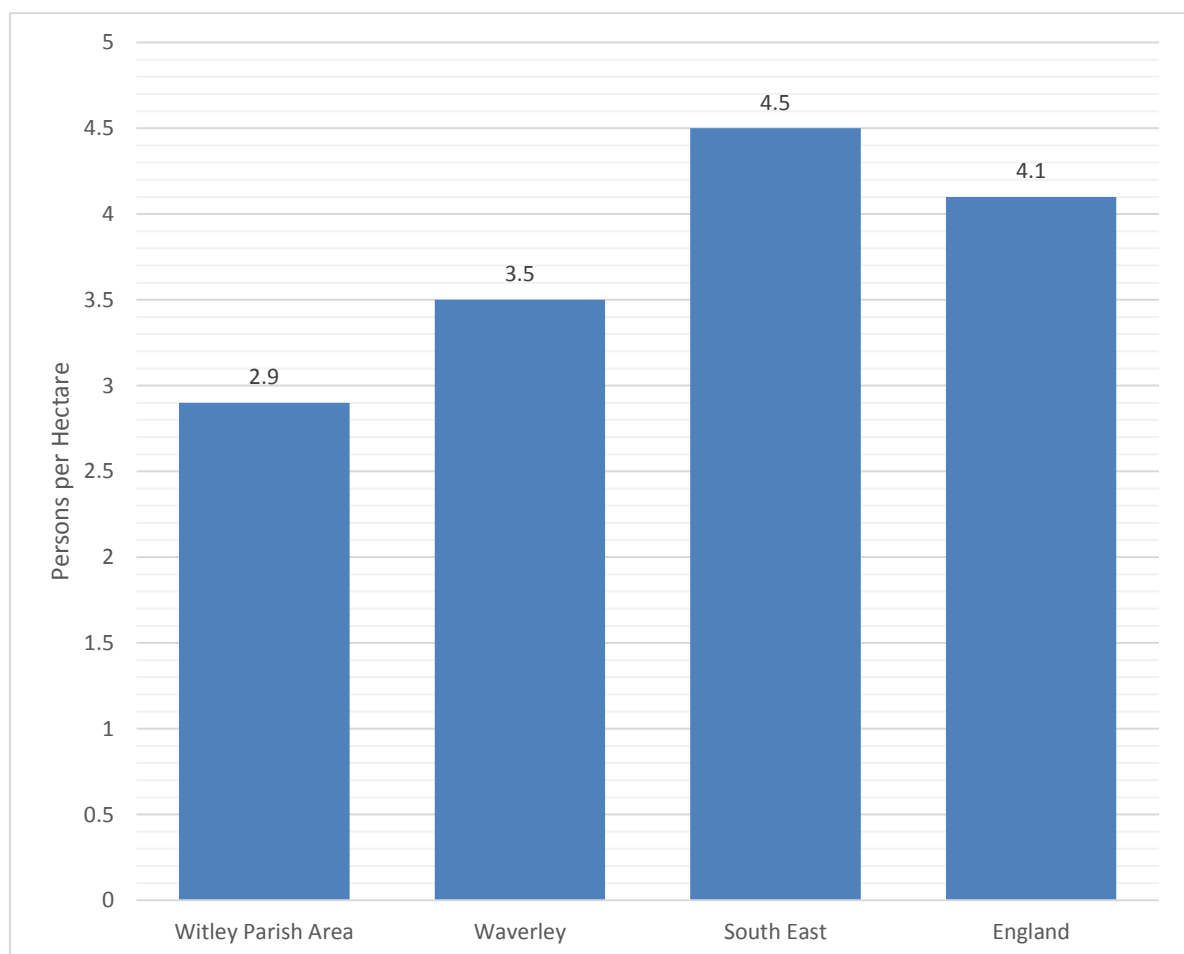


Figure 5: Population Density (2011 Census)

2.9 By comparison, the population density of the Witley Parish is slightly below that of Waverley District, at 2.9 persons per hectare, and 3.5 persons per hectare respectively. Both the Witley Parish and Waverley District recorded lower population densities than the South East Region (4.5 persons per hectare) and England (4.1 persons per hectare). This result is to be expected, as while Witley contains rural settlements to the south and larger villages to the north, a large proportion of the Parish is undeveloped.

People

Age Profile

2.10 Figure 6 below provides a comparison of the age profile of residents of Witley Parish at the time of 2011 Census⁴, as compared to Waverley District, the South East Region, and England.

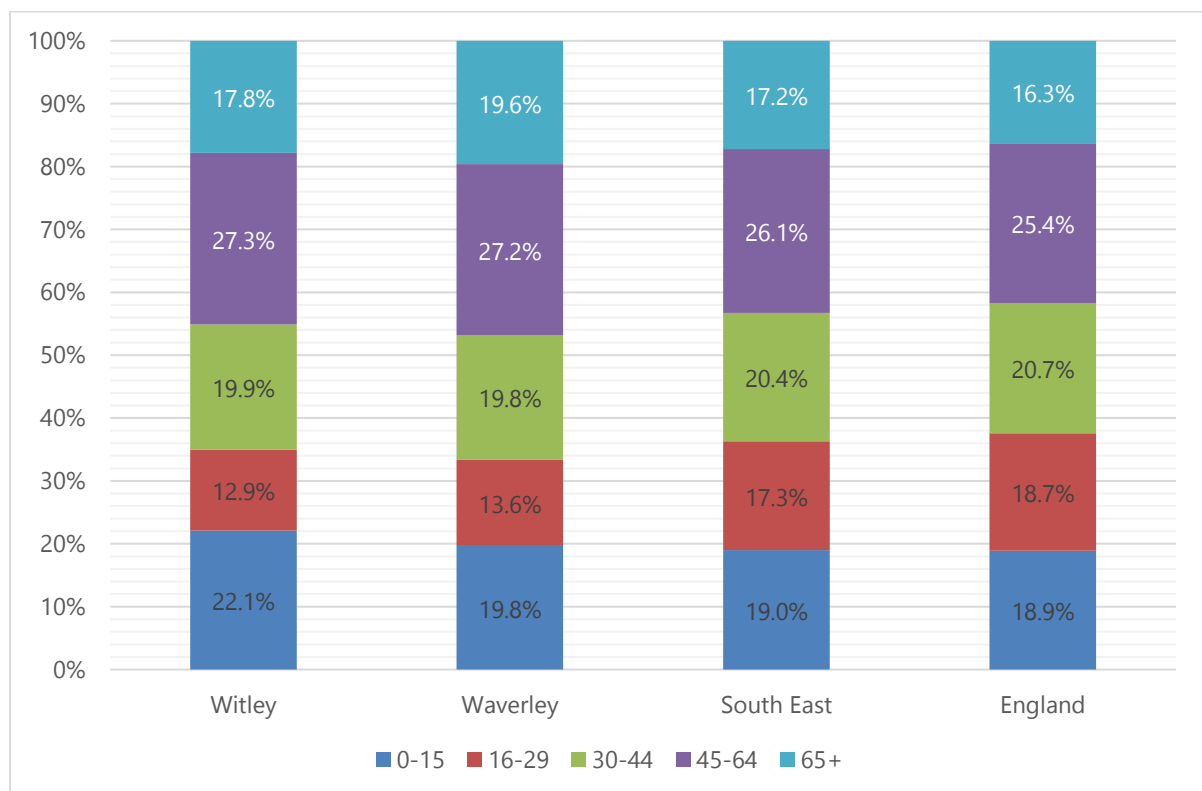


Figure 6: Age Profile Comparison

³ ONS (2011), 2011 Census, Table ID S102EW: Population Density, available at: <https://www.nomisweb.co.uk/census/2011/qs102ew>

⁴ ONS (2011), 2011 Census, Table ID KS102EW: Age Structure, available at: <https://www.nomisweb.co.uk/census/2011/ks102ew>

2.11 Witley Parish has a comparatively high percentage of the population in the 0 – 15 years age bracket (22.1%) as compared to the District, Region and Countrywide average, being 19.8%, 19.0% and 18.9% respectively. Conversely, the 16 – 29 age bracket is much smaller in Witley Parish as compared to the South East Region and English average. This age bracket is roughly on par with that of Waverley District. This could suggest that Witley Parish is a predominantly a family area, with children moving out of the area from the age of 16 onwards and new arrivals often being families with parents over the age of 30 and children below the age of 15.

2.12 Figure 7 below uses mid-year population estimates to track changes to the number of Witley Wider Area residents in each age group between 2002 and 2016⁵.

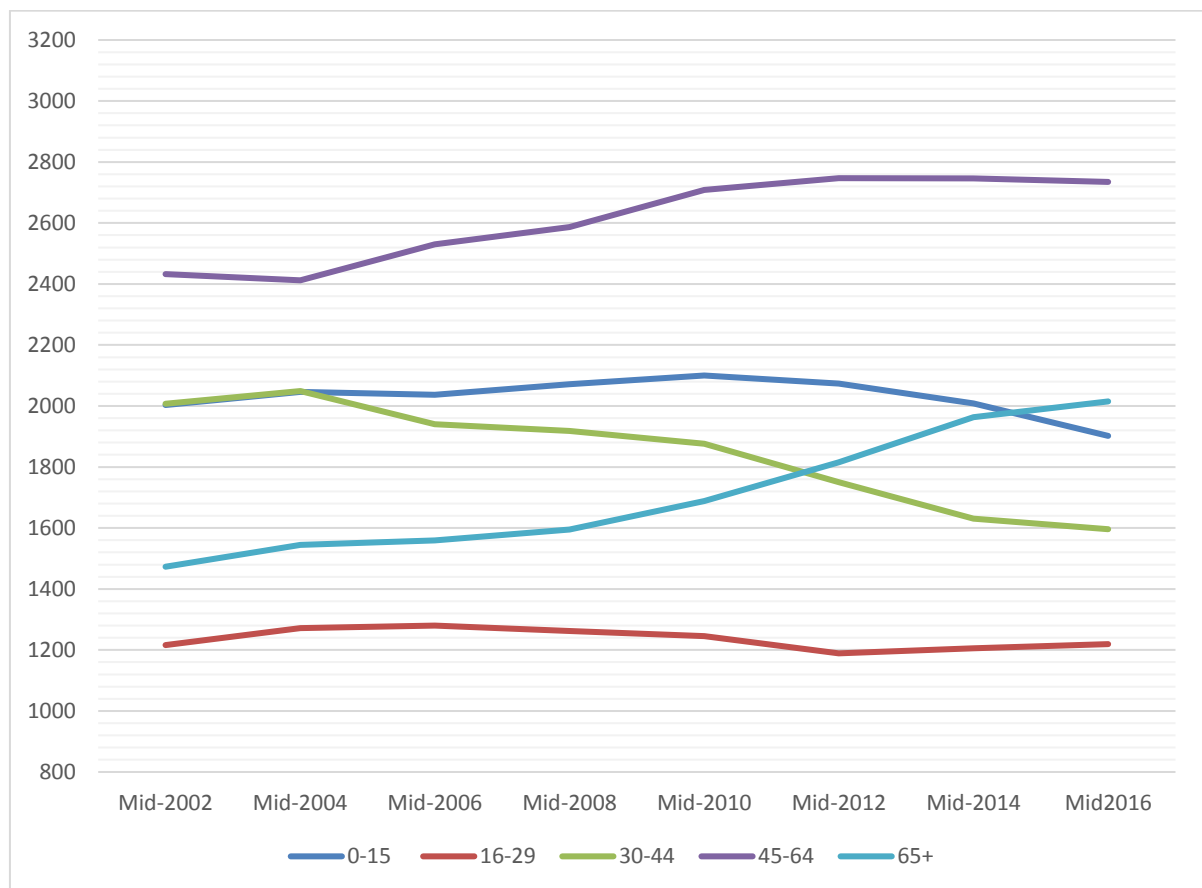


Figure 7: Witley Wider Area Population Change by Age Group (2002 to 2016)

⁵ ONS (2017) Lower Super Output Area Mid-Year Population Estimates, available at: <https://www.ons.gov.uk/peoplepopulationandcommunity/populationandmigration/populationestimates/datasets/lowersuperoutputareamidyearpopulationestimates>

2.13 The age bracket that has experienced the most marked growth is 65+ years, which has increased considerably across the period 2002 to 2016, most notably since 2010. The 45-64 years age bracket has also grown, though Figure 7 illustrates a steady incline across the documented period. The 30 – 44 years age bracket has experienced a notable decline across the 2002 to 2016 period, and the 0 – 15 years age bracket has also started to decline, as of mid-2010. Meanwhile, the 16 – 29 years age bracket has remained fairly constant across the period, presenting as a much smaller proportion of the total population than any other age group.

2.14 These trends show that the population is ageing. Furthermore, the more recent decline of 30 – 44 year olds, and 0 – 15 year olds suggests that perhaps fewer families are moving into the Parish. It also reinforces the suggestion that young people leave the area once moving out of the family home.

Ethnic Groups

2.15 Table 1 below sets out the ethnicity of residents of the Witley Parish, in comparison to the Waverley District, the South East Region, and England at the time of the 2011 Census⁶.

Table 1: Ethnic Group (2011 Census)

Ethnic Group	Witley	Waverley	South East	England
White	96.4%	96.0%	90.7%	85.4%
Mixed/multiple ethnic group	1.4%	1.3%	1.9%	2.3%
Asian/Asian British	1.5%	1.9%	5.2%	7.8%
Black/African/Caribbean/Black British	0.5%	0.4%	1.6%	3.5%
Other	0.1%	0.3%	0.6%	1.0%

2.16 The ethnic profile of Witley Parish is not particularly diverse, with a high proportion of white residents. Witley Parish’s ethnic profile is highly comparable to that of the Waverley district, and broadly similar to that of the South East and England. Most non-white residents of Witley Parish are either of mixed or multiple ethnicities, or of Asian / British Asian Heritage, with a very low Black / African / Caribbean / Black British population. The ‘other’ category comprises of all other ethnic groups, of which there is only a very small population in Witley.

⁶ ONS (2011), 2011 Census, Table ID QS201EW: Ethnic Group, available at: <https://www.nomisweb.co.uk/census/2011/qs201ew>

Religious Groups

2.17 Table 2 below sets out the religious profile of residents of Witley Parish at the time of the 2011 Census⁷, as compared to the Waverley District, the South East Region and England.

Table 2: Religion (2011 Census)

Religion	Witley	Waverley	South East	England
Christian	65.6%	65.2%	59.8%	59.4%
Buddhist	0.3%	0.4%	0.5%	0.5%
Hindu	0.1%	0.3%	1.1%	1.5%
Jewish	0.2%	0.2%	0.2%	0.5%
Muslim	0.3%	0.6%	2.3%	5.0%
Sikh	0.0%	0.1%	0.6%	0.8%
Other religion	0.4%	0.4%	0.5%	0.4%
No religion	24.7%	25.3%	27.7%	24.7%
Religion not stated	8.4%	7.6%	7.4%	7.2%

2.18 The predominant religion in Witley Parish is Christianity, with a slightly higher proportion of the population identifying as Christian as compared to the District, the Region and the English average. After Christianity, the two most common responses were no religion, or religion not stated, for which the Witley Parish was comparable to Waverley, the South East and England. All other religious groups are not highly represented in the Parish, with less than 1% of the population identifying as Buddhist, Hindu, Jewish, Muslim, Sikh or Other.

Country of Birth

2.19 Table 3 below provides a breakdown of the country of birth of residents of the Witley Parish, as compared to the Waverley District, the South East Region and England as per the 2011 Census⁸.

Table 3: Country of Birth (2011 Census)

Country of Birth	Witley	Waverley	South East	England
United Kingdom	90.3%	89.4%	87.9%	86.2%
Ireland	0.5%	0.7%	0.7%	0.7%
Other EU	3.2%	3.3%	3.7%	3.7%
Other countries	6.0%	6.6%	7.7%	9.4%

⁷ ONS (2011), 2011 Census, Table ID QS210EW: Religion (Detailed), available at: <https://www.nomisweb.co.uk/census/2011/qs210ew>

⁸ ONS (2011), 2011 Census, Table ID QS203EW: Country of Birth (Detailed), available at: <https://www.nomisweb.co.uk/census/2011/qs203ew>

2.20 The vast majority of residents of the Witley Parish were born in the United Kingdom, with just under 10% of the population having been born outside of the United Kingdom. Of those born outside of the United Kingdom, the majority (6%) were born outside of Ireland and the European Union.

3.0 Housing

3.1 This Section sets out some key information on housing in the Witley Parish, including data on tenure, type and composition taken from the 2011 Census.

Housing Type

3.2 Figure 8 below provides a comparison of housing types in the Witley Parish at the time of the 2011 Census, as compared to housing types across Waverley, the South East, and England⁹.

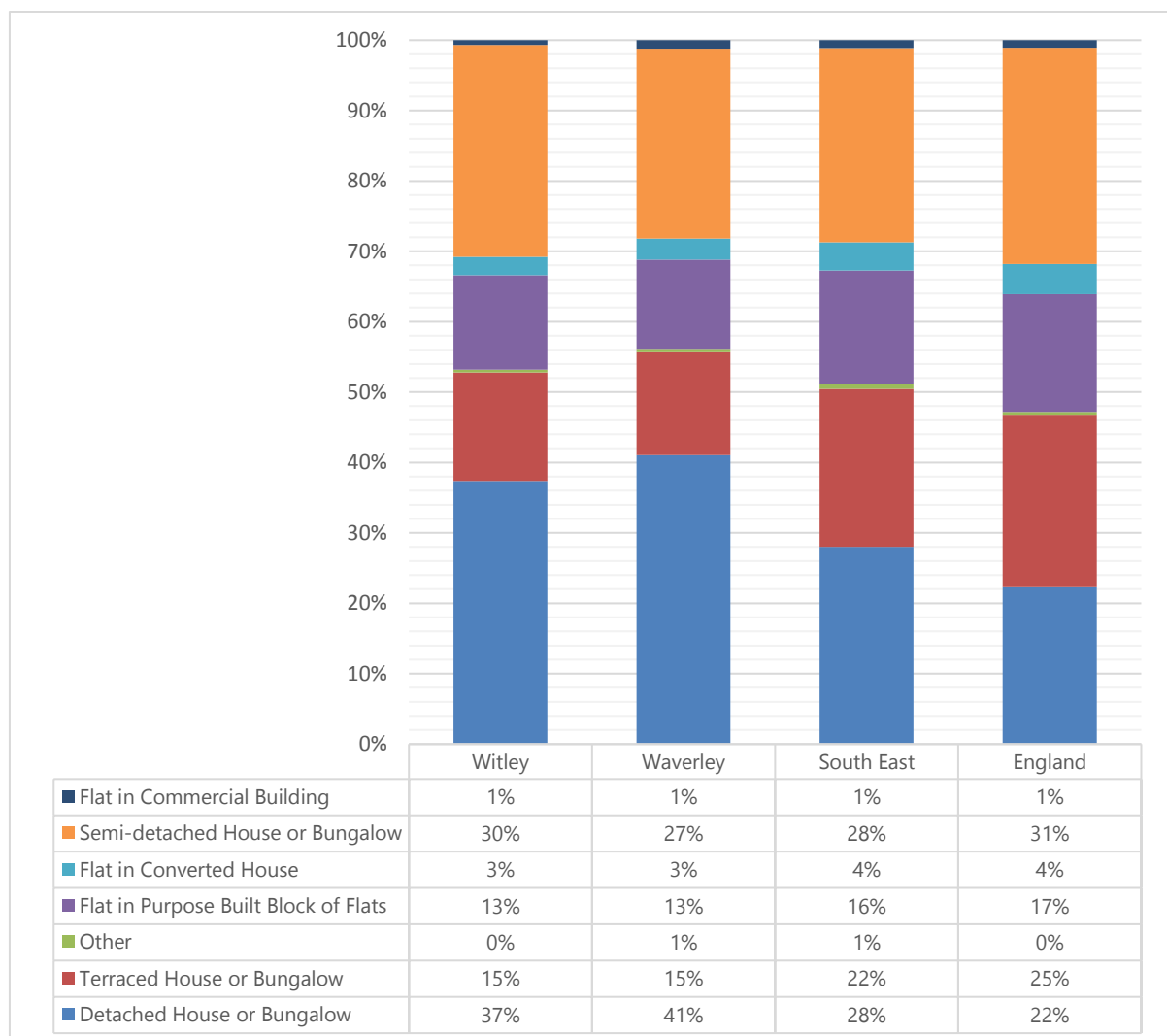


Figure 8: Comparison of Housing Type (2011 Census)

⁹ ONS (2011), 2011 Census, Table ID: KS401EW - Dwellings, household spaces and accommodation type, available at: <https://www.nomisweb.co.uk/census/2011/ks401ew>

3.3 The most common housing types in the Witley Parish are detached houses / bungalows (37%) and semi-detached houses / bungalows (30%). It is noteworthy, however, that there are still several other dwelling types in the area. In particular, terraced dwellings, and purpose built flats are relatively common, making up 15% and 13% of all housing in the Witley Parish respectively.

3.4 At the 2011 Census, data was also recorded regarding number of bedrooms per dwelling. Figure 9 below provides a comparison of the number of bedrooms per dwelling for the Witley Parish, as compared with the Waverley District, South East Region and England¹⁰.

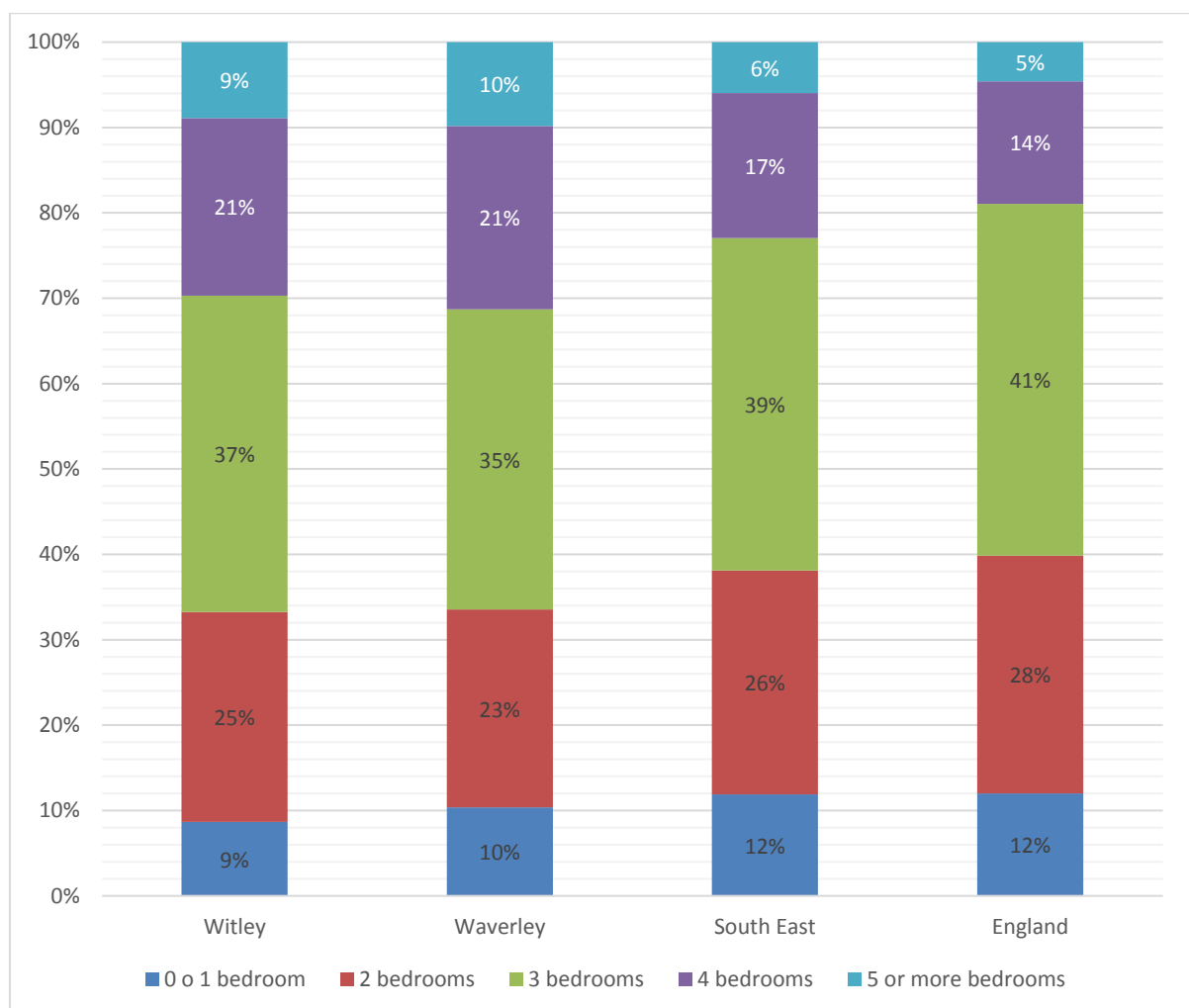


Figure 9: Bedrooms per Dwelling (2011 Census)

¹⁰ ONS (2011), 2011 Census, Table ID: QS411EW – Number of Bedrooms, available at: <https://www.nomisweb.co.uk/census/2011/qs411ew>

3.5 As seen in Figure 9, the Witley Parish demonstrates very similar bedroom per dwelling figures as compared with the Waverley District. Furthermore, the Witley Parish is broadly similar to Regional and National trends with respect to dwellings with 0 – 3 bedrooms. However, it is important to note that the Witley Parish (and Waverley District) have a considerably higher proportion of dwellings with 4 bedrooms, and dwellings with 5 or more bedrooms, as compared to the South East Region and England.

Tenure

3.6 Figure 10 below provides a comparison of housing tenures for the Witley Parish, Waverley District, the South East Region, and England at the time of 2011 Census¹¹.

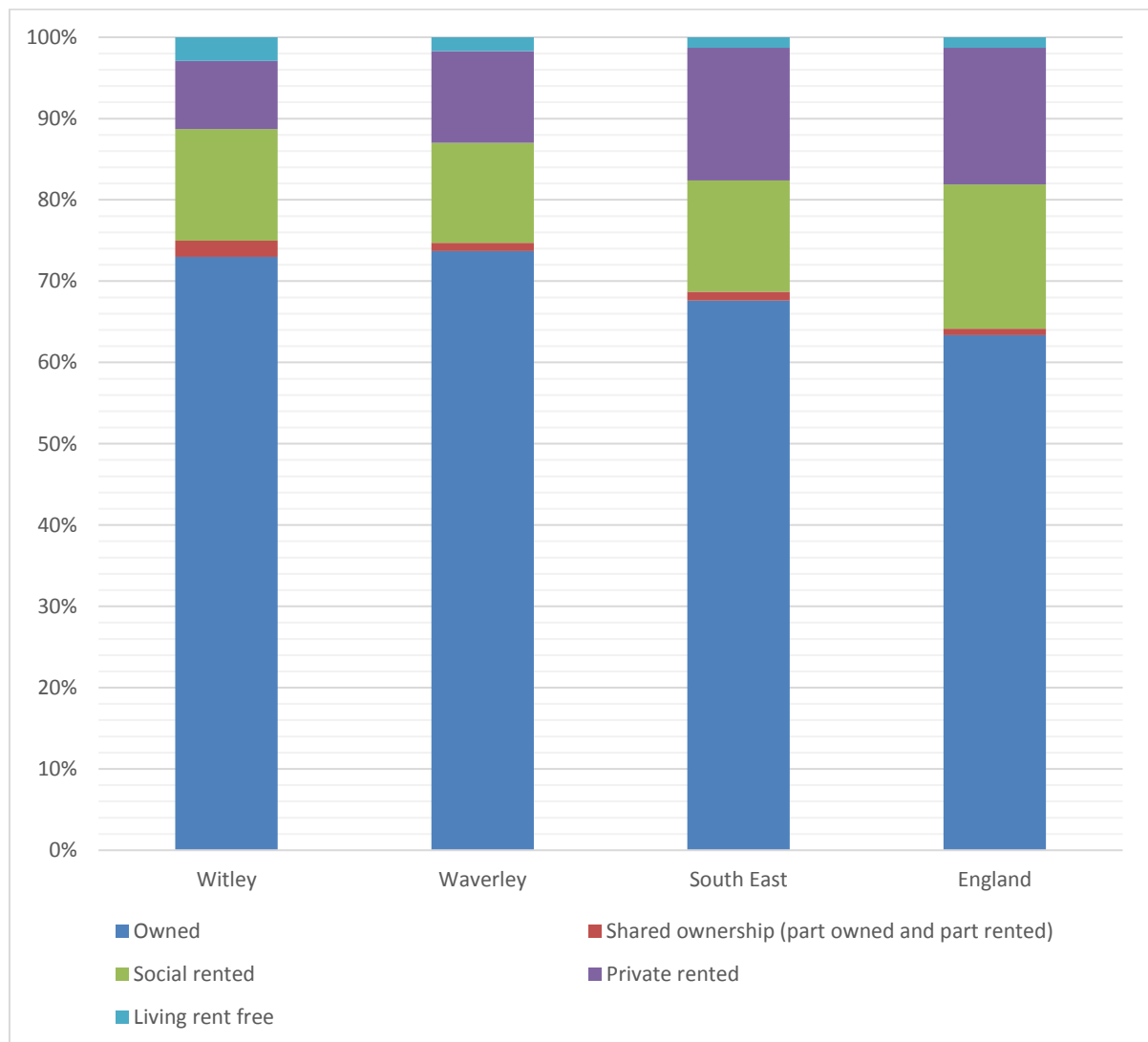


Figure 10: Comparison of Housing Tenures (2011 Census)

3.7 A considerable number of properties in the Witley Parish are privately owned (73%) when compared to England (63%), however, this is broadly in line with the District (74%). There are far fewer socially rented properties in the Witley Parish as compared to countrywide, at 14% and 18% respectively. However, Witley Parish has an equivalent proportion of socially rented properties as compared to the South East Region (14%), and more than the Waverley District (12%). There are a small proportion of properties that are privately rented in the Witley Parish (8%) as compared to the District (11%), the Region (16%) and England (17%).

Household Size and Composition

3.8 Figure 11 below provides a comparison of Household Sizes in the Witley Parish at the time of the 2011 Census¹², as compared to the District, Region and England.

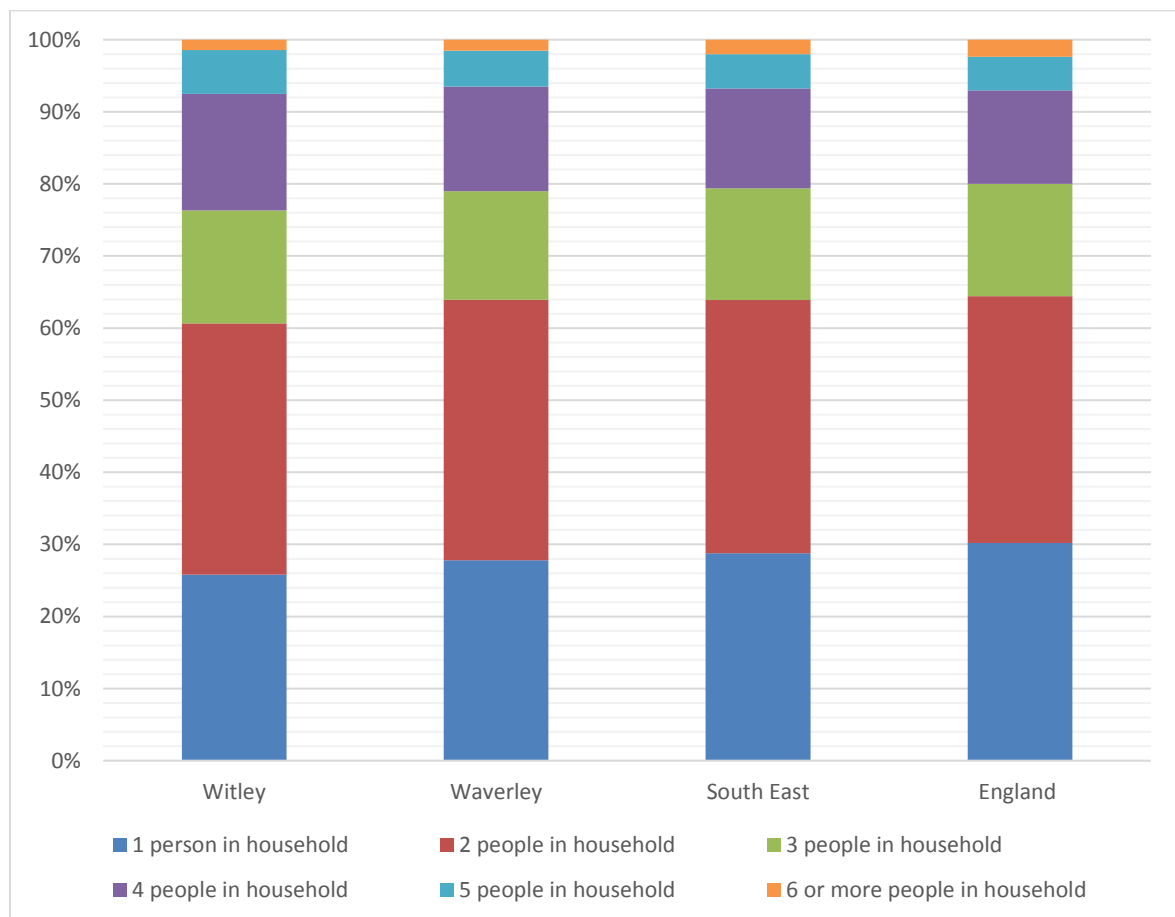


Figure 11: Comparison of Household Size (2011 Census)

¹² ONS (2011), 2011 Census, Table ID QS406EW: Household Sizes, available at: <https://www.nomisweb.co.uk/census/2011/qs406ew>

- 3.9 Average household size in the Witley Parish is comparable to household sizes across the District, South East Region and England for all groupings. The two most common household sizes in the Witley Parish is 2 persons or 1 person, which makes up 35% and 26% of all households in the parish, respectively. Notably, less than a quarter of households in the Witley Parish comprise of more than 3 persons (23%).
- 3.10 In terms of household composition, there is significant variety across the Witley Parish, as set out in Table 4 below. The most common household type is that of 'one family', though a variety of family types have been identified at the time of the 2011 Census¹³.

Table 4: Household Composition (2011 Census)

Household Type	Witley	Waverley	South East	England
One person household (OPH)	25.8%	27.8%	28.8%	30.2%
OPH: Aged 65 and over	13.5%	14.2%	12.7%	12.4%
OPH: Other	12.4%	13.6%	16.1%	17.9%
One family household (OFH)	69.6%	66.8%	63.9%	61.8%
OFH: All aged 65 and over	9.8%	10.8%	9.0%	8.1%
OFH: Married / same-sex civil partnership couple	43.3%	40.9%	35.9%	33.2%
OFH: Married / same-sex civil partnership couple: No children	14.3%	14.8%	13.3%	12.3%
OFH: Married / same-sex civil partnership couple: Dependent children	22.4%	20.6%	17.1%	15.3%
OFH: Married / same-sex civil partnership couple: All children non-dependent	6.6%	5.4%	5.5%	5.6%
OFH: Cohabiting couple	8.8%	8.2%	9.8%	9.8%
OFH: Cohabiting couple: No children	4.8%	4.9%	5.5%	5.3%
OFH: Cohabiting couple: Dependent children	3.5%	2.9%	3.9%	4.0%
OFH: Cohabiting couple: All children non-dependent	0.5%	0.3%	0.5%	0.5%
OFH: Lone parent	7.7%	6.9%	9.2%	10.6%
OFH: Lone parent: Dependent children	4.6%	4.1%	6.1%	7.1%
OFH: Lone parent: All children non-dependent	3.1%	2.9%	3.1%	3.5%
Other household types (OHT)	4.6%	5.5%	7.4%	8.0%
OHT: With dependent children	1.7%	1.6%	2.3%	2.6%
OHT: All full-time students	0.0%	0.3%	0.5%	0.6%
OHT: All aged 65 and over	0.3%	0.3%	0.3%	0.3%
OHT: Other	2.5%	3.3%	4.2%	4.5%

¹³ ONS (2011), 2011 Census, Table ID KS105EW: Household Composition, available at: <https://www.nomisweb.co.uk/census/2011/ks105ew>

4.0 Employment and Economic Activity

4.1 This Section sets out some key information regarding employment in the Witley Parish, including data on economic activity and inactivity, and occupation, taken from the 2011 Census.

Economic Activity

4.2 Figure 12 below details, simply, the economic activity of those residents of the Witley Parish aged 16 – 74 years at the time of the 2011 Census¹⁴. Economic activity relates to whether or not a person who was working or looking for work directly before the Census. Rather than a simple indicator of whether or not someone was currently in employment, it provides a measure of whether or not a person was an active participant in the labour market. Figure 11 also provides a comparison of the economic activity of residents of the Witley Parish, to the overall data trends for Waverley, the South East, and England.

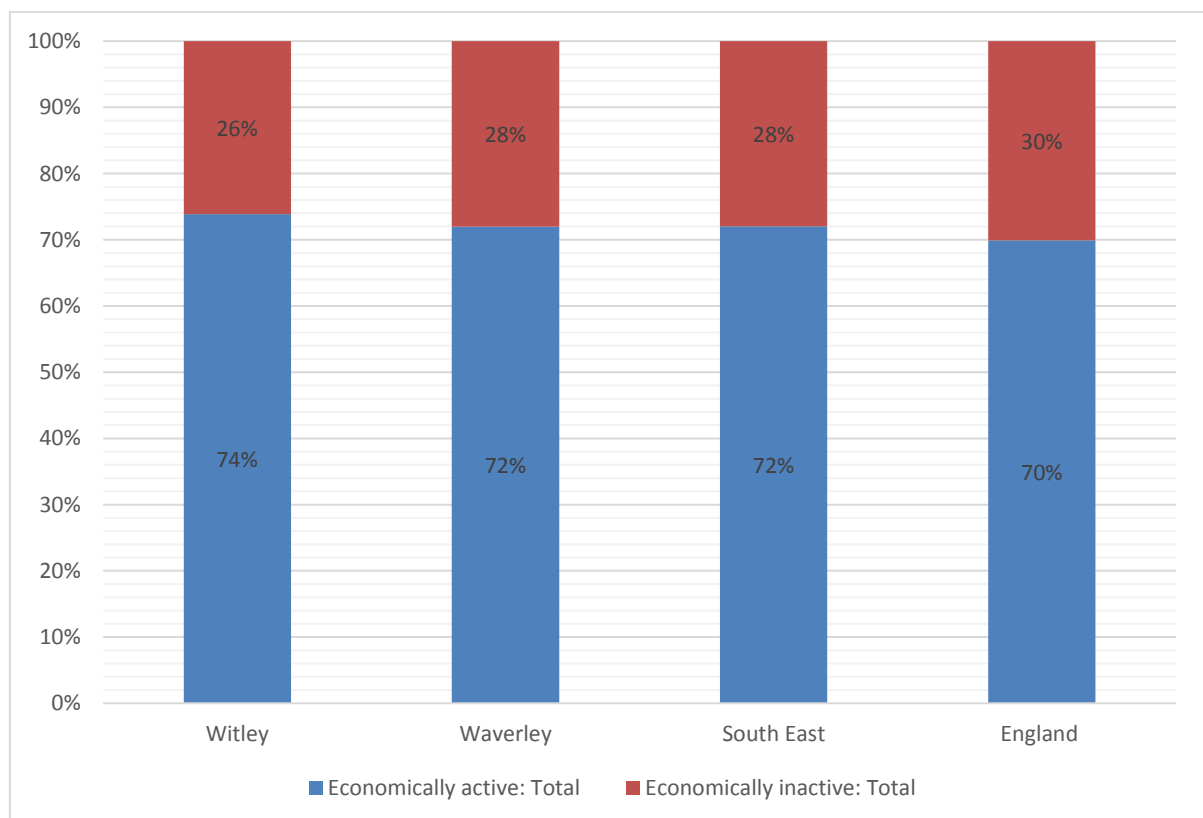


Figure 12: Economic Activity (2011 Census)

¹⁴ ONS (2011), 2011 Census, Table ID QS601EW: Economic Activity, available at: <https://www.nomisweb.co.uk/census/2011/qs601ew>

- 4.3 As can be seen from Figure 12 above, the Witley Parish has a slightly higher proportion of economically active residents (74%) as compared to the Waverley District (72%), South East Region (72%) and England (70%).
- 4.4 Table 5 below provides a more detailed breakdown of the economic activity of residents of the Witley Parish, District, Region and England¹⁵.

Table 5: Economic Activity - Detailed (2011 Census)

	Witley	Waverley	South East	England
Economically active: Total	73.9%	72.0%	72.1%	69.9%
Employee: Part-time	14.5%	13.6%	13.8%	13.7%
Employee: Full-time	38.7%	38.6%	40.4%	38.6%
Self-employed with employees: Part-time	0.4%	0.5%	0.4%	0.4%
Self-employed with employees: Full-time	3.4%	2.8%	1.9%	1.8%
Self-employed without employees: Part-time	4.6%	4.4%	3.0%	2.5%
Self-employed without employees: Full-time	6.9%	6.8%	5.7%	5.0%
Unemployed	2.3%	2.4%	3.4%	4.4%
Full-time student	3.0%	2.9%	3.3%	3.4%
Economically inactive: Total	26.1%	28.0%	27.9%	30.1%
Retired	13.0%	14.3%	13.7%	13.7%
Student (including full-time students)	5.1%	5.1%	5.2%	5.8%
Looking after home or family	4.9%	4.9%	4.4%	4.4%
Long-term sick or disabled	1.7%	2.1%	2.9%	4.0%
Other	1.4%	1.5%	1.8%	2.2%

- 4.5 Residents of the Witley Parish are broadly representative of Waverley, the South East and England in terms of level of economic activity. However, there are some more subtle variations when it comes to the detailed breakdown, despite similar figures in most areas.
- 4.6 For example, a higher percentage of the economically active bracket are currently working part-time in the Witley Parish, as compared to the District, Region and National average. Furthermore, a smaller proportion of economically active residents of the Witley Parish are 'unemployed' (i.e. actively searching for employment), as compared to the South East Region and England.

¹⁵ ONS (2011), 2011 Census, Table ID QS601EW: Economic Activity, available at: <https://www.nomisweb.co.uk/census/2011/qs601ew>

4.7 In terms of the economically inactive bracket, the Witley Parish scores below or equal to Waverley, the South East and England averages for all categories.

4.8 Notably, the Witley Parish has a lower proportion of economically inactive residents who are retired as compared to Waverly, the South East and England, which is interesting considering the previously discussed aging population in the Parish.

Occupation

4.9 The Census records the occupations of those in work by nine broad occupational groupings. While not explicitly being linked to skills and pay, higher numbered occupations (with Category 1 being the highest) will often be more skilled and better paid.

4.10 Figure 13 below sets out the occupational breakdown in the WP, in comparison to LB Barnet, London and England¹⁶.

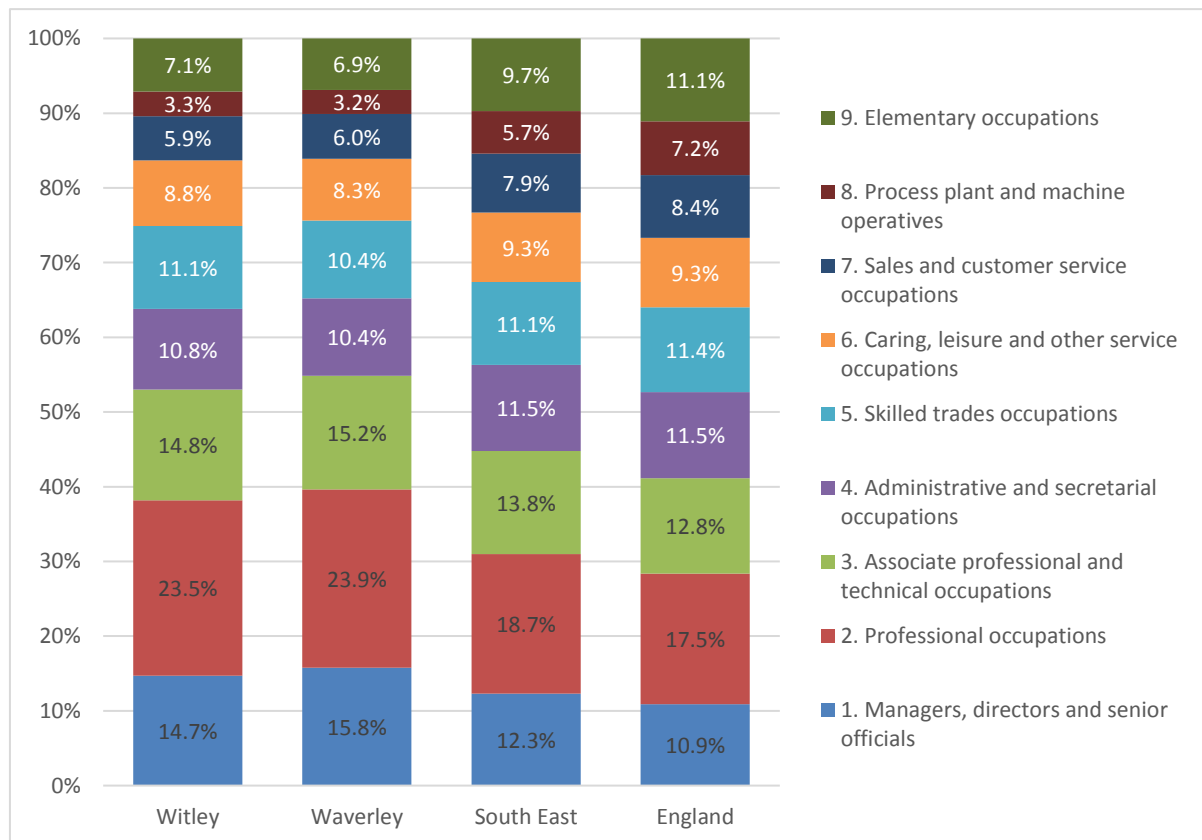


Figure 13: Comparison of Occupations (2011 Census)

¹⁶ ONS (2011), 2011 Census, Table ID QS606UK: Occupation, available at: <https://www.nomisweb.co.uk/census/2011/qs606uk>

- 4.11 Similar to Waverley District, the residents in the Witley Parish are mostly employed in highly skilled and better paid jobs, with around 40% of residents in Category 1 or 2, as compared to around 28.4% in England, 31% in the South East. In particular, there is a very large proportion of residents occupied in a professional occupation (23.5%).
- 4.12 At the other end of the scale, few residents are engaged in less skilled jobs, particularly process, plant and machine operatives (3.3%) and elementary occupations (7.1%).
- 4.13 With respect to Administrative and secretarial occupations; skilled trades and occupations; and caring, leisure and other service occupations, residents of the Witley Parish is representative of occupation trends seen in the Waverley District, the South East and England.

5.0 Travel Patterns

5.1 This Section sets out some key information regarding travel patterns in the Witley Parish, including data on car ownership, travel to work modal splits and distances travelled, taken from the 2011 Census. It should be noted that travel to work data relates solely to residents ages 16 – 74 years.

Car Ownership

5.2 Census data records how many vehicles are privately owned by each household group. Figure 14 below provides an overview of car ownership per household for residents of the Witley Parish at the time of the 2011 Census¹⁷, as compared to Waverley, the South East and England.

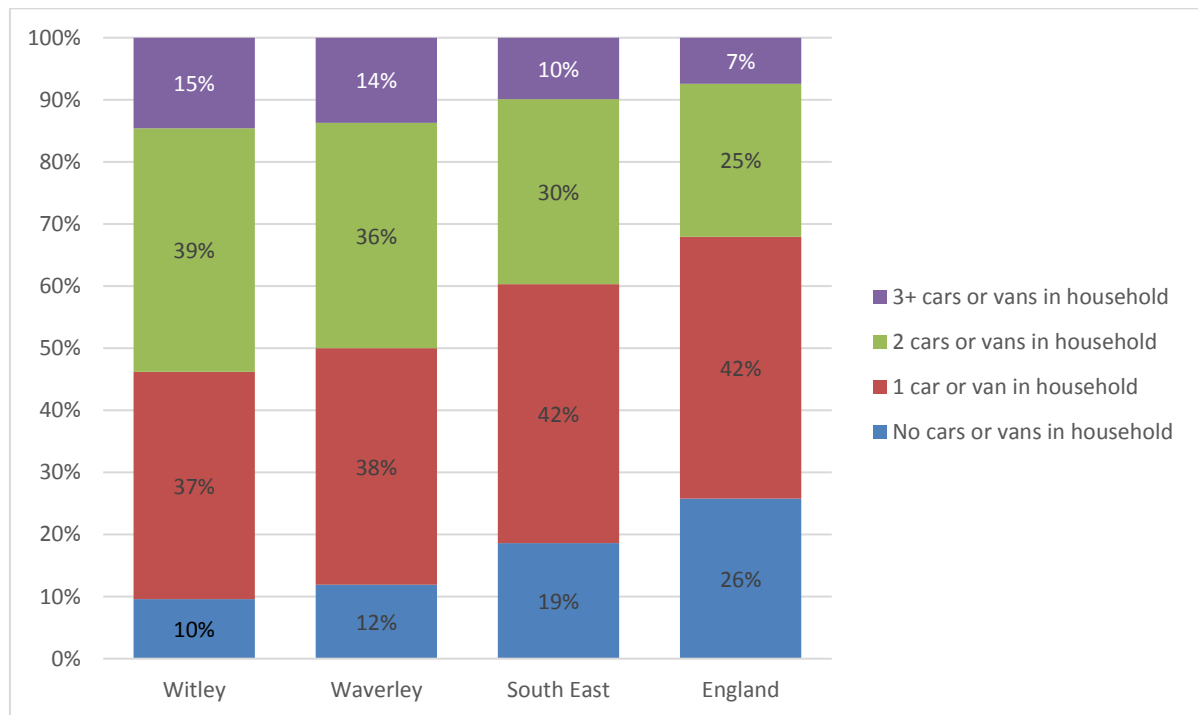


Figure 14: Car Ownership Comparison (2011 Census)

5.3 As seen in Figure 13 above, car ownership in the Witley Parish is comparably high, with 15% of households owning 3 or more private vehicles, compared to 10% for the South East Region and 7% for England.

¹⁷ ONS (2011), 2011 Census, Table ID QS416EW: Car or Van availability, available at: <https://www.nomisweb.co.uk/census/2011/qs416ew>

5.4 As seen in Figure 10 above, and discussed in Paragraph 3.7, household sizes in the Witley Parish are comparable to those in the South East Region and England. Therefore, the higher vehicle ownership demonstrated in Figure 13 cannot be easily explained by larger household sizes. This suggests that households of the Witley Parish are more likely to own private vehicles than their counterparts across the Region and England.

Distance Travelled to Work

5.5 Figure 15 below provides a breakdown of the distance travelled to work by residents of the Witley Parish at the time of the 2011 Census, as compared to Waverley District, the South East Region and England¹⁸.

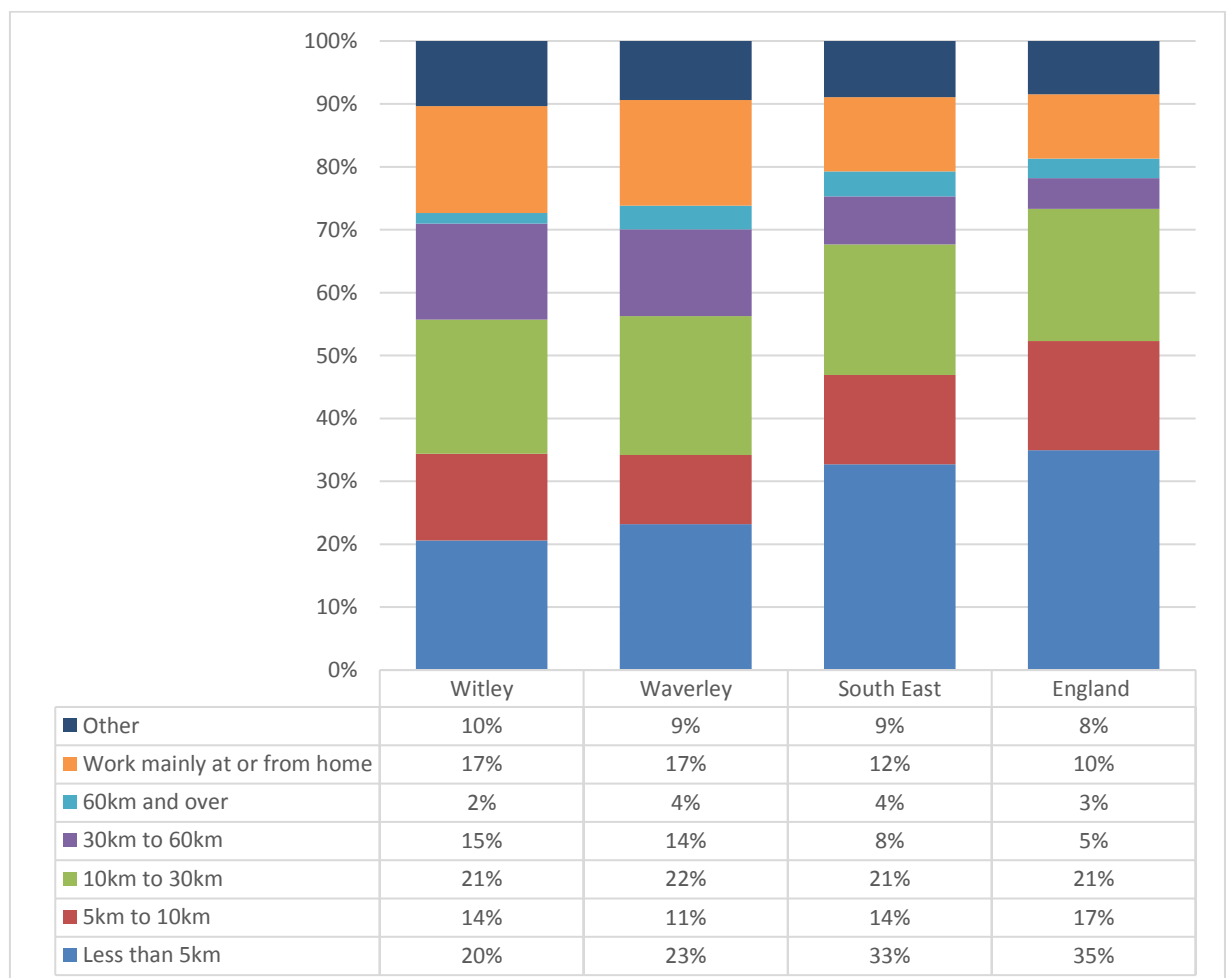


Figure 15: Distance Travelled to Work (2011 Census)

¹⁸ ONS (2011), 2011 Census, Table ID QS702EW: Distance travelled to work, available at <https://www.nomisweb.co.uk/census/2011/qs702ew>

- 5.6 The majority of residents of the Witley Parish (51%) work at home, or within 10km of home. Those working within 10km but not at home may include those working at small business sites in the Parish, Godalming (for most residents) and may include Haslemere and Guildford and some smaller nearby employment areas.
- 5.7 The most popular distance is 10km to 30km, which, in addition to Haslemere and Guildford for residents over 10km from these locations, also includes places such as Farnham, Aldershot, Farnborough, Woking, Leatherhead and Horsham.
- 5.8 However, it is important to note that approximately 17% of residents of the Witley Parish are travelling more than 30km to work. Whilst this proportion is similar to the Waverley trends, it is considerably higher than Region and National averages whereby only 12% and 8% of residents, respectively, travel more than 30km to work. This could be due to a high number of residents travelling by train from Witley and Milford Stations to London and, to a much lesser extent, Portsmouth.
- 5.9 Furthermore, the average distance travelled to work by residents of the Witley Parish at the time of the 2011 Census was 20.3km, which was almost equal to Waverley District, for which the average was 20.2km. However, the distance travelled by Witley Parish is notably higher than Regional and National averages, being 16.6km and 14.9km respectively.
- 5.10 The slightly longer distances travelled to work could help explain the higher vehicle ownership in the Witley Parish as compared to the South East and England, however, this is not statistically proven.

Method of Travel to Work

- 5.11 It is possible to use 2011 Census data to determine the modal split (i.e. transport choice) of residents in the Witley Parish when travelling to work. Table 6 below sets out the means of travel to work of residents at the time of the 2011 Census in comparison with Waverley, the South East and England¹⁹.

Table 6: Travel to Work Method (2011 Census)

Method of Travel to Work	Witley	Waverley	South East	England
Work mainly at or from home	11.9%	11.6%	8.0%	6.6%
Underground, metro, light rail, tram	0.2%	0.2%	0.2%	2.6%
Train	7.3%	7.5%	4.8%	3.3%
Bus, minibus or coach	0.9%	1.1%	3.0%	4.7%

¹⁹ ONS (2011), 2011 Census, Table ID QS701EW: Method of Travel to Work, available at <https://www.nomisweb.co.uk/census/2011/qs701ew>

Taxi	0.1%	0.1%	0.2%	0.3%
Motorcycle, scooter or moped	0.8%	0.5%	0.6%	0.5%
Driving a car or van	42.8%	39.1%	39.0%	34.9%
Passenger in a car or van	2.6%	2.5%	3.1%	3.2%
Bicycle	0.8%	1.0%	2.0%	1.9%
On foot	3.4%	5.2%	6.7%	6.3%
Other method of travel to work	0.2%	0.3%	0.3%	0.3%
Not in employment	28.8%	30.9%	32.1%	35.3%

5.12 The most popular mode of transport for Witley Parish residents travelling to work was driving a private car. In combination, 46.3% of Witley Parish residents are commuting to work via private vehicle, either as the driver or a passenger, and including motorcycles and taxis. This figure is slightly higher than the District (42.2%), the Region (42.9%) and notably higher than England (38.9%).

6.0 Indices of Multiple Deprivation

6.1 The Index of Multiple Deprivation (IMD) is a dataset that seeks to measure the level of deprivation for small areas in England²⁰. The indices of deprivation are determined by seven domains, being:

- a. Income (which measures the proportion of the population experiencing deprivation relating to low income).
- b. Employment (which measures the proportion of the working age population in an area involuntarily excluded from the labour market).
- c. Education, skills and training (which measures the lack of attainment and skills in the local population).
- d. Health and disability (which measures the risk of premature death and the impairment of quality of life through poor physical or mental health).
- e. Crime (which measures the risk of personal and material victimisation at a local level).
- f. Barriers to Housing and Services (which measures the physical and financial accessibility of housing and local services).
- g. Living Environment (which measures the quality of the local environment).

6.2 Each of the seven domains is given a different weighting when calculating the overall Indices of Multiple Deprivation for a neighbourhood. These are in accordance with an assessment of the impact of each domain of deprivation on overall deprivation. For example, income and employment deprivation are given a weighting of 22.5% as these are considered to be the most pivotal indicators of deprivation.

6.3 On average, the 7 LSOAs forming the Witley Wider Area are in 30% least deprived in the country, according to the 2015 Index of Multiple Deprivation. Table 7 below breaks this down by domain, and Figure 16 shows the position of each LSOA within the Witley Wider Area.

²⁰ Ministry of Housing, Communities & Local Government (2015), English Indices of Deprivation 2015, available at: <https://www.gov.uk/government/statistics/english-indices-of-deprivation-2015>

Table 7: IMD for Witley Wider Area

Domain	011C	011D	011E	012B	012C	012D	012E	Average
Income	20% least deprived	50% most deprived	20% least deprived	10% least deprived	10% least deprived	10% least deprived	50% least deprived	30% least deprived
Employment	10% least deprived	50% most deprived	10% least deprived	10% least deprived	10% least deprived	10% least deprived	50% least deprived	20% least deprived
Education, Skills and Training	20% least deprived	50% most deprived	20% least deprived	10% least deprived	20% least deprived	20% least deprived	40% most deprived	30% least deprived
Health and Disability	20% least deprived	40% least deprived	10% least deprived	10% least deprived	10% least deprived	10% least deprived	20% least deprived	20% least deprived
Crime	30% least deprived	50% least deprived	40% least deprived	10% least deprived	20% least deprived	40% least deprived	50% least deprived	30% least deprived
Barriers to Housing and Services	10% least deprived	10% least deprived	40% most deprived	10% most deprived	30% most deprived	20% most deprived	20% least deprived	50% least deprived
Living Environment	20% least deprived	30% least deprived	30% least deprived	50% most deprived	30% most deprived	50% least deprived	10% least deprived	30% least deprived
Overall IMD Score	10% least deprived	40% least deprived	10% least deprived	30% least deprived	10% least deprived	20% least deprived	40% least deprived	20% least deprived

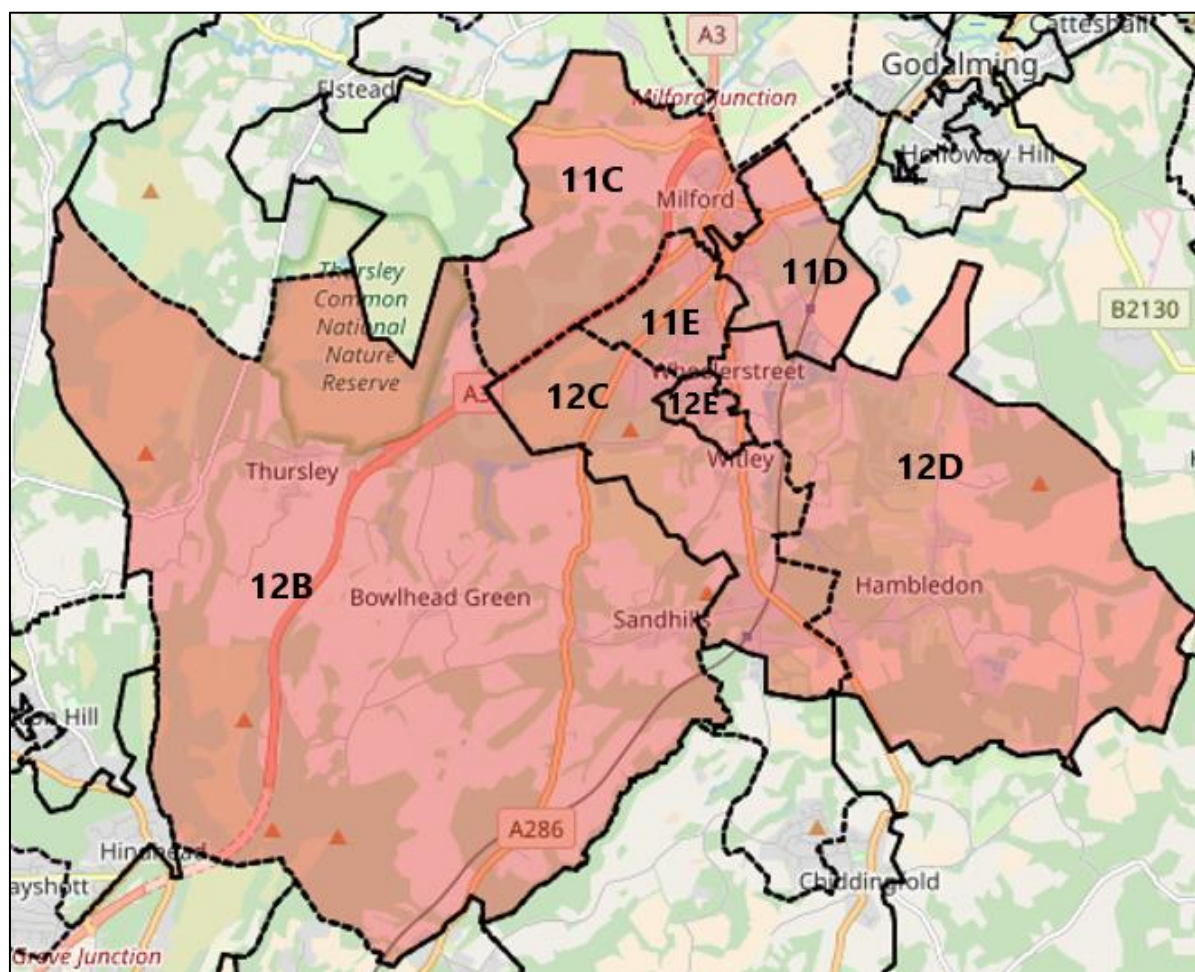


Figure 16: Illustration showing each LSOA within the Witley Wider Area

- 6.4 Table 7 shows that overall, all 7 LSOAs in the Witley Wider Area are within the 40% least deprived areas in the country. The majority of LSOAs comprising the Witley Wider Area are in the 20% least deprived areas in the Country.
- 6.5 There are two LSOAs within the Witley Wider Area which have generally scored lower across most domains, and these are 11D and 12E.
- 6.6 The domain that the Witley Wider Area has scored consistently and comparatively poorly for is 'Barriers to Housing and Services'. The Barriers to Housing domain measures issues relating to access to housing such as affordability and is made up of the following indicators –
- Household overcrowding: The proportion of all households in a LSOA which are judged to have insufficient space to meet the household's needs;

- Homelessness: Local authority district level rate of acceptances for housing assistance under the homelessness provisions of the 1996 Housing Act, assigned to the constituent LSOAs; and
- Housing affordability: Difficulty of access to owner-occupation or the private rental market, expressed as the inability to afford to enter owner-occupation or the private rental market.

6.7 This will be of note as the Witley Parish Neighbourhood Plan is prepared.

7.0 Conclusions

7.1 This report has provided a review of the key demographic characteristics of the Witley Parish and surrounding area and inform the preparation of the Witley Neighbourhood Plan. The report has relied on 2011 Census Data, in tandem with Mid-Year Population Estimates, and the Ministry of Housing, Communities and Local Government's (MHCLG) Indices of Multiple Deprivation.

7.2 Key findings of this report include:

- a. Whilst the population of Witley grew between 2002 and 2010, this growth has plateaued, with the area experiencing a slight decline in population numbers of recent years.
- b. The age bracket experiencing most growth in Witley is 65 years and older, which indicates that the Parish's population is ageing.
- c. Household size is the Parish low, with approximately 61% of all households comprising 1 or 2 persons. Conversely, 67% of dwellings in the Parish have 3 or more bedrooms, of which 30% have 4 or more bedrooms. This could suggest that, in planning terms, homes are 'under-occupied'.
- d. Economic activity in Witley Parish is slightly above national and regional averages, and residents of the Parish are more commonly employed in highly skilled and better paid jobs.
- e. Car ownership and reliance in the Parish is higher than Regional and National averages.
- f. Whilst the area scores well for most domains comprising the indices of multiple deprivation, the Witley Wider Area scores poorly for the 'Barriers to Housing and Services' domain.

Nexus Planning

London Office

T: + 44 (0) 207 261 4240

nexusplanning.co.uk

